

# Nursing Facility Stakeholder Meeting

March 20, 2024

# Agenda

- Announcement, Introductions
- SBS Due Date
- P4P Update
- Center of Excellence-NF update
- Eligibility Redetermination check-in
- HB 23-1228 Utilization Payment
- Public Comment

# Supplemental Behavioral Services (SBS) Add-On

- Due date is March 31
  - Applications can be submitted to:  
Department of Health Care Policy & Financing  
ATTN: Christine Bates  
303 E. 17th Avenue  
Denver, CO 80203
  - Or electronically to: [Christine.Bates1@state.co.us](mailto:Christine.Bates1@state.co.us)  
Please provide a separate email, requesting confirmation of receipt, if applications are submitted electronically.

# Pay for Performance Update

- Submissions and facility reviews complete.
  - 152 homes submitted applications
  - All time high
- CY 2024 includes a new metric related to the Center of Excellence for Behavioral Health in Nursing Homes (COE-NF)

# COE-NF P4P New Metric

23.1- Please complete the Behavioral Health Care Tool. Applicants are required to complete **Mental Health 101: Suicide Prevention & De-Escalation Strategies** and at least two (2) of the three (3) following foundational trainings:

- 1. Serious Mental Illness**
- 2. Substance Abuse 101**
- 3. Addressing Co-Occurring Disorders in Nursing Facilities**

These trainings are all accessible on the Center of Excellence for Nursing Facilities' website (<https://nursinghomebehavioralhealth.org/news-events/>). Note: Click the "See All Upcoming Trainings" button on the top right of the News & Training page to view and access all the scheduled trainings available at a given time. COE-NF typically posts new trainings 3-4 weeks ahead of time, so please check the News & Training page on a monthly basis, minimum.

# COE-NF

## **Upcoming Training**

[An Overview of Bipolar Disorder for Nursing Facility Staff](#) March 26<sup>th</sup>, 2024 @ 2:00pm ET

This half-hour training will introduce staff to a basic understanding of bipolar disorder, its onset, symptoms, and treatments. Participants will leave with an understanding of this mood disorder and will be able to identify its symptoms and approaches to help residents experiencing challenges from bipolar disorder.

**Learning Objectives:** Participants will gain an understanding of Bipolar Disorder. Participants will be able to recognize and understand signs and symptoms of Mania and Depression. Participants will learn appropriate responses of engagement with residents.

## **Educational Flyers**

[Bipolar Disorder Facts Pamphlet](#)

[Advancing Behavioral Health Equity in Nursing Facilities](#)

## **On-Demand Learning**

[Bipolar Disorder: Understanding and Recognizing the Signs and Symptoms](#) (bite-sized learning)

[Recognizing and Treating Bipolar Disorder in Nursing Facilities](#) (module)

## **Screening Tool**

[Columbia-Suicide Severity Rating Scale](#)

# Medical Service Board

- P4P revisions and Removal of Non-Medicaid ancillary costs are posted for Public Review
  - Increases P4P payments
  - Adjusts the substandard deficiency penalty
  - Flexibility on prerequisite surveys
  - Removes non-Medicaid ancillary costs from per diem rates

# Medical Service Board

- Public Rule Review
  - March 18th + this meeting
- Medical services board initial
  - April 12th
- Final Adoption
  - May 10th



# Eligibility Redetermination notices to Nursing Homes

- Automated emails with eligibility dates sent in February
- Tentatively will be sent 2nd week of each month

# Eligibility Redetermination notices to Nursing Homes

- Some data is aged due to turnover and ownership changes
- Email [Richard.Clark@state.co.us](mailto:Richard.Clark@state.co.us) to update email contact(s) if you did not receive file.
  - Medicaid Provider ID
  - NPI
  - Primary contact (email)
  - Secondary contacts email)

# High Medicaid Utilization Payment

- Communicated & made necessary adjustments to payments for nursing homes close to either 75% or 85% Medicaid utilization rate in February
- Will provide letters to nursing homes providing their payment amount and calculation later this week or early next week
- Entire SFY 23-24 payment will occur with April transaction

# Open Comment

**- ACCME & NAB credits will be offered -**



## Understanding Race-Based, Historical, and Intergenerational Trauma in Nursing Facility Residents

**- ACCME educational credits ONLY -**

**Tuesday, March 19 • 2 – 3 p.m. ET**

**REGISTER HERE:**

<https://bit.ly/UnderstandingTraumaNFR>

## Mental Health First Aid (MHFA)

Registration is limited. A minimum of five (5) participants are required for the session to occur.

**Friday, March 22**

**11 a.m. – 4:30 p.m. ET**

**TO REGISTER:**

To register for the Mental Health First Aid training, please send your name, email address, agency and training date to [coeinfo@allianthealth.org](mailto:coeinfo@allianthealth.org) by Friday, March 15, 2024.

## An Overview of Bipolar Disorders for Nursing Facility Staff

**Tuesday, March 26 • 2 – 2:30 p.m. ET**

**REGISTER HERE:**

<https://bit.ly/OverviewBipolarDisordersNFStaff>

## Question, Persuade, Refer (QPR)

### Suicide Prevention Training

Registration is limited.

**Wednesday, March 20 • 12 – 1:30 p.m. ET**

**REGISTER HERE:**

[https://bit.ly/COEQPR\\_3-20-24](https://bit.ly/COEQPR_3-20-24)

## Navigating the Path of Substance Use Recovery in Nursing Facility Residents: Exploring the Stages of Change

**Thursday, March 28 • 1 – 2 p.m. ET**

**REGISTER HERE:**

<https://bit.ly/NavigatePathSURecoveryinNFR>

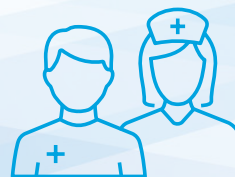
## Opioid Overdose & Naloxone Administration

**- ACCME educational credits ONLY -**

**Thursday, March 21 • 1 – 1:30 p.m. ET**

**REGISTER HERE:**

<https://bit.ly/OpioidOverdoseNaloxoneAdmin>



**AUDIENCE:**  
All nursing facility staff.

This event is hosted by the Center of Excellence for Behavioral Health in Nursing Facilities (COE-NF).

# Frequently Asked Questions

**Q What is the Center of Excellence for Behavioral Health in Nursing Facilities (COE-NF)?**

**A** The COE-NF is a national initiative created to build the capacity of staff in Centers for Medicare and Medicaid Services (CMS) certified nursing facilities to care for residents with behavioral health disorders. The COE-NF supports focused resource development and dissemination, training, technical assistance, and workforce development to facilities that service residents with serious mental illness (SMI), substance use disorders (SUD) and co-occurring disorders (COD). Note: The COE-NF does not provide direct services to residents.

**Q What is a Center of Excellence?**

**A** A Center of Excellence is a team of subject matter experts (SME) with a shared mission to provide organizations with best practices around a particular area of interest. The COE-NF is one of over 10 centers funded by SAMSHA that help lead efforts to promote mental health, prevent substance misuse, and support organizations nationwide.

**Q Who established the COE-NF?**

**A** Alliant Health Solutions was awarded a three-year grant from the Substance Abuse and Mental Health Services Administration (SAMHSA) in collaboration with CMS to create this Center of Excellence.

**Q What services does the COE-NF provide to nursing facilities?**

**A** The COE-NF provides training, technical assistance, and resources to help nursing facilities strengthen and sustain effective behavioral health practices with focused education on:

- Serious mental illnesses
- Substance use disorders
- Co-occurring disorders
- Trauma-informed care
- Suicide prevention
- De-escalation techniques
- Behavioral Health Equity

**Q Are there any services the COE-NF does not provide?**

**A** The COE-NF does not provide support around dementia or other neurodegenerative disorders or medical conditions. The COE-NF primarily focuses on mental illness and substance use disorders.

**Q How are services delivered?**

**A** Most COE-NF services, including one-on-one consultation with a behavioral specialist, technical assistance and training, are delivered virtually through Zoom and Microsoft Teams. Nursing facilities can also access on-demand resources such as short video clips (bite-sized learning), learning modules, and recorded webinars via the COE-NF website at [www.nursinghomebehavioralhealth.org](http://www.nursinghomebehavioralhealth.org).

**Q Does the COE-NF have educational flyers/fact sheets on mental health and substance use topics?**

**A** Yes, educational flyers/fact sheets are located on the COE-NF website at [www.nursinghomebehavioralhealth.org](http://www.nursinghomebehavioralhealth.org).



**Q** Is there a cost associated with COE-NF services?

**A** No. The COE-NF provides free training and technical assistance to certified CMS nursing facilities.

**Q** Who qualifies for support from the COE-NF?

**A** Nursing facilities (sometimes called nursing homes or skilled nursing facilities) that are certified by CMS and are interested in increasing the knowledge, competency, and skills of their team to care for residents with behavioral health disorders. Note: Senior living or congregate care settings, such as assisted living facilities, are not eligible for support from the COE-NF.

**Q** How can I determine if I am a certified CMS facility?

**A** Certified CMS nursing facilities will have a CMS certification number (CCN). The CCN is used to verify Medicare/Medicaid certification for survey and certification, assessment-related activities, and communication.

**Q** What services can non-certified nursing facilities access?

**A** Non-certified nursing facilities can access all resources from the COE-NF website, subscribe to the monthly newsletter and attend training events. Note: Technical assistance and personalized training requests outside our posted offerings are exclusively available to certified CMS facilities.

**Q** How can I request COE-NF services?

**A** Certified CMS nursing facilities can request assistance by completing the online “request for assistance” form via the COE-NF website at [www.nursinghomebehavioralhealth.org](http://www.nursinghomebehavioralhealth.org).

**Q** Who can help me decide what training and technical assistance is right for my facility?

**A** Once the COE-NF receives your request for assistance, a COE-NF team member (behavioral specialist) will contact you to help assess your specific facility needs. Together, you will work to customize your training needs, schedule your training events and ensure you have the resources needed to educate your team.

**Q** Can I receive assistance with emergencies occurring in the facility?

**A** No. The COE-NF provides nonemergent support. For a mental health emergency call 988; for a medical emergency call 911 or seek immediate attention at the nearest emergency room.

**Q** Can I speak to a COE-NF representative by phone?

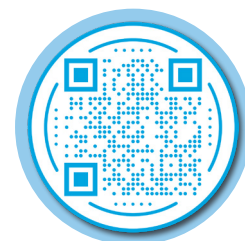
**A** Yes. You can request to speak to a team member through our website at [www.nursinghomebehavioralhealth.org](http://www.nursinghomebehavioralhealth.org) or by leaving a message on our National Call Center Hotline at 1-844-314-1433. A member of our COE-NF team will respond to your request.

**Q** Is the COE-NF a regulatory agency?

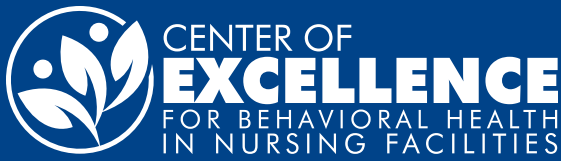
**A** No. The COE-NF aims to support nursing facilities in acquiring additional knowledge to care for residents with behavioral health conditions. All interactions with the COE-NF are confidential.

**Q** Are continuing education credits offered through the COE-NF? If so, what is the cost?

**A** Yes. The COE-NF provides continuing education credits for specified trainings to participants who attend the entire event and complete the evaluation. Credits are provided at no cost.



Scan the QR code to view resources and trainings from the COE-NF.



# Register for Managing Substance Use Disorders (SUD) in Nursing Facilities OFFICE HOURS

Interested in receiving expert answers to substance use challenges you are facing in your nursing facility?

Join subject matter experts, Dr. Jenn Azen and Dr. Swati Gaur, during monthly office hours as they answer questions to your complex cases. No question is too big or small.

Monthly office hours are held on the 3rd Friday of each month from 1-1:30p.m. ET.

SUD Office Hours begins Friday, April 19, 2024.

## REGISTER:

[https://bit.ly/SubstanceUseDisorderOfficeHours\\_2024](https://bit.ly/SubstanceUseDisorderOfficeHours_2024)



## FEATURED SPEAKERS:



**Dr. Jenn Azen, MD, MPH**  
Clinical Associate Professor, University of Washington School of Medicine,  
Department of Medicine, Division of General Internal Medicine  
Attending Physician, UW Medicine Post-Acute Care Service  
Medical Director, UW Medical Center Addiction Medicine Consult Service  
Primary Care Physician and Physician Educator, UW Medicine Primary Care Clinics



**Dr. Swati Gaur, MD, MBA, CMD, AGSF**  
Medical Director, Alliant Health Solutions  
Medical Director, Post Acute Care Northeast Georgia Health System

**AUDIENCE:**  
These sessions are appropriate for clinicians, nurses, administrators, and social workers.

This material was created by the Center of Excellence for Behavioral Health in Nursing Facilities (COE-NF). This work is made possible by grant number 1H79SM087155 from the Substance Abuse and Mental Health Services Administration (SAMHSA). Its contents are solely the responsibility of the authors and do not necessarily represent the official views of SAMHSA.

